

# Retail Space for Lease at Gracy Farms

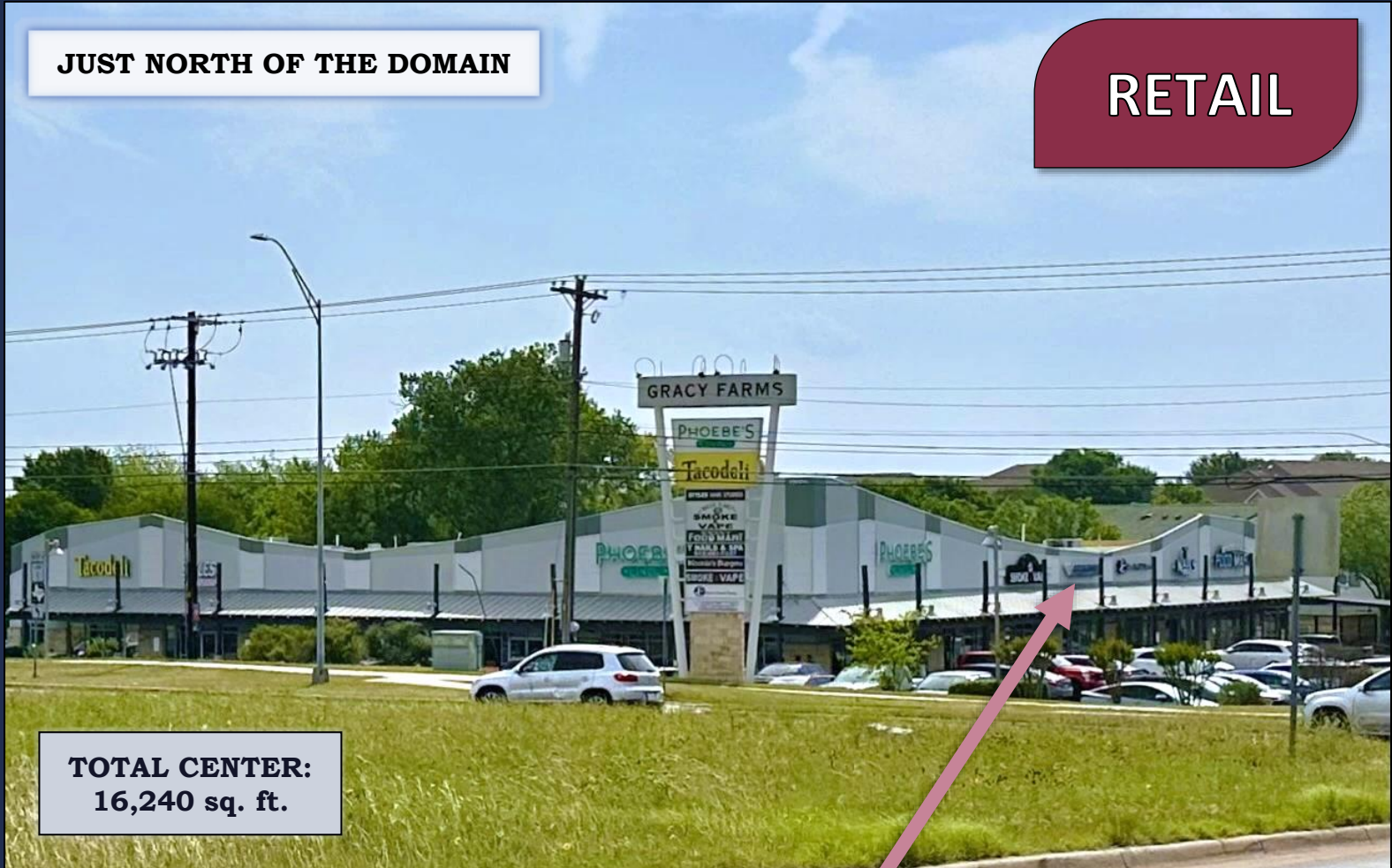
12001 Burnet Rd.  
Austin, TX, 78758 (Travis County)



[www.bluecrowproperties.com](http://www.bluecrowproperties.com)

JUST NORTH OF THE DOMAIN

RETAIL



**TOTAL CENTER:**  
16,240 sq. ft.

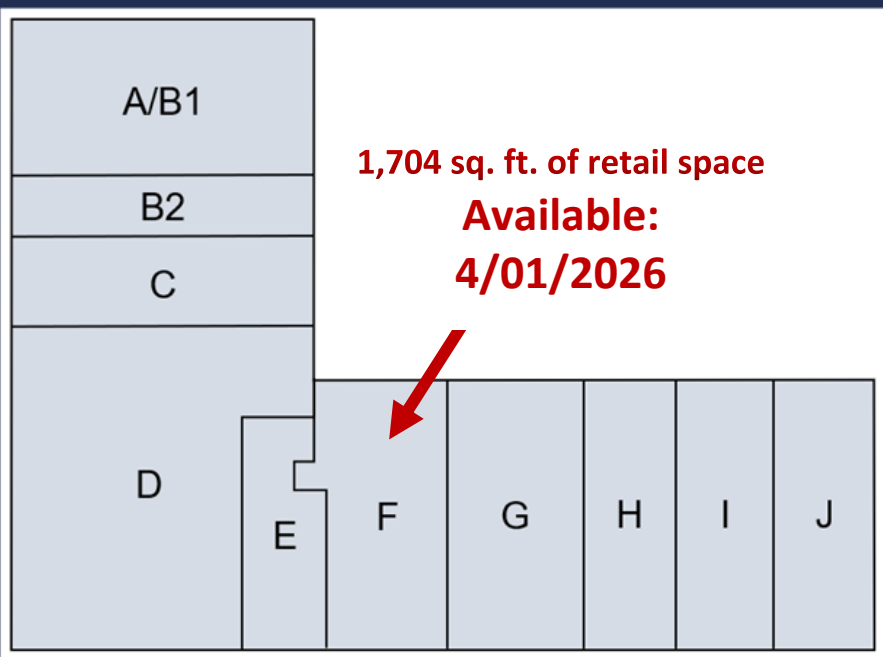
## FOR LEASE:

- **Available Space:** Suite F with 1,704 sq. ft. → **available 4/01/2026**
- **Lease Rent:** \$2.92 psf monthly / \$35.00 psf annually
- **Est. 2025 NNN Expense:** \$1.72 psf monthly / \$20.60 psf annually
- **Within 5-mile radius:**
  - **Population:** 253,359
  - **Total Households:** 99,550
  - **Average HH Income:** \$100,330

*Major residential growth underway!*  
~400+ new units within  
walking distance in 2027

# FOR LEASE | GRACY FARMS RETAIL CENTER

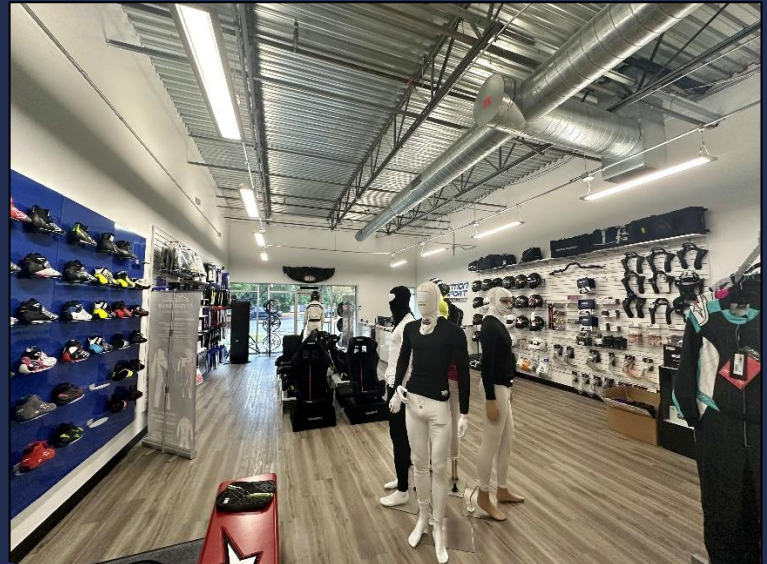
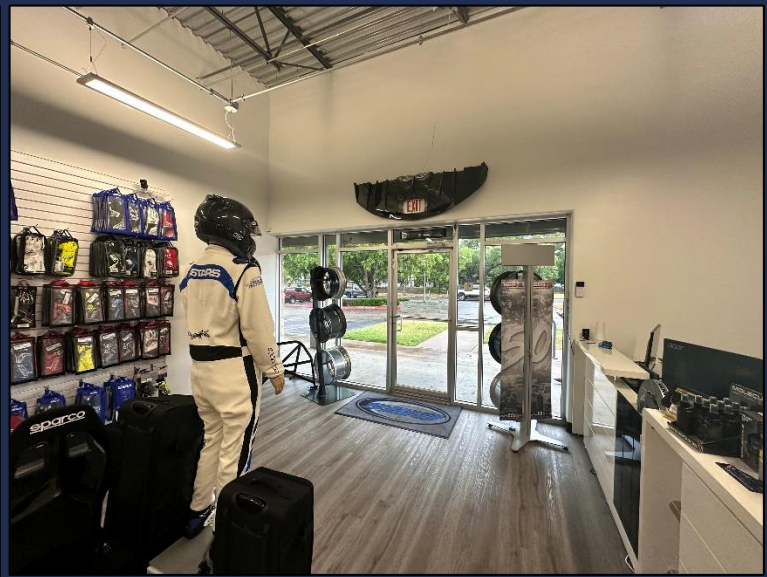
12001 N BURNET RD, AUSTIN, TX 78758



**Come Join These Tenants!**



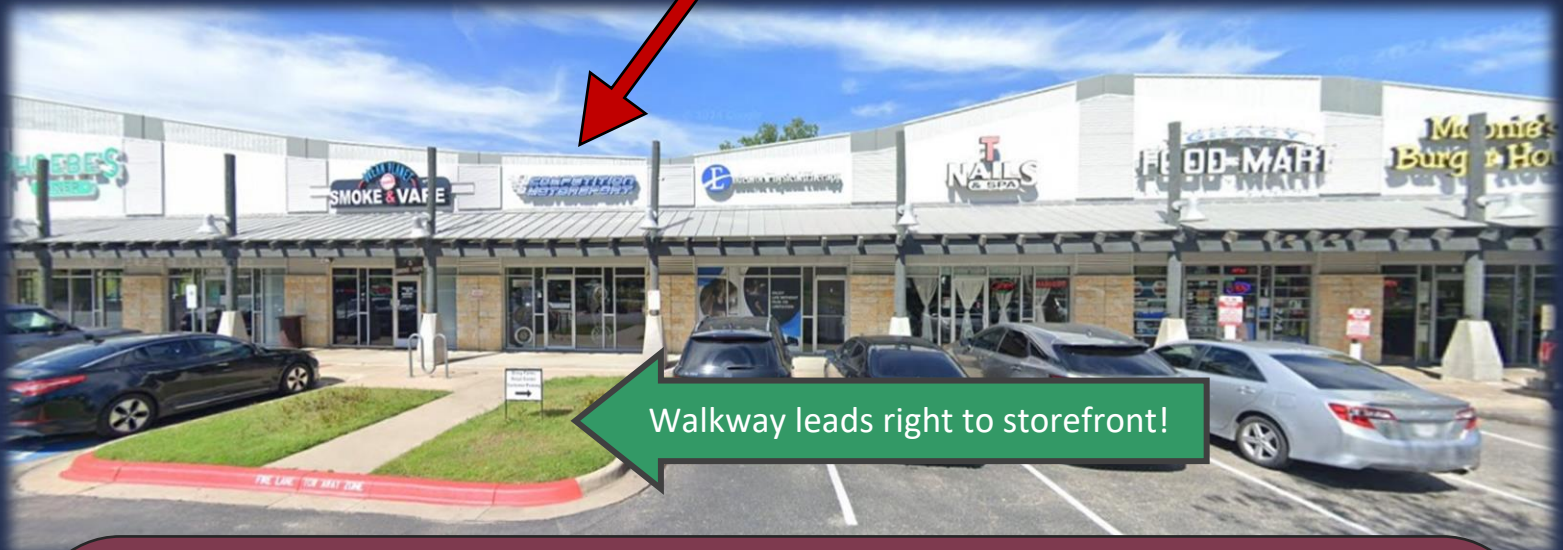
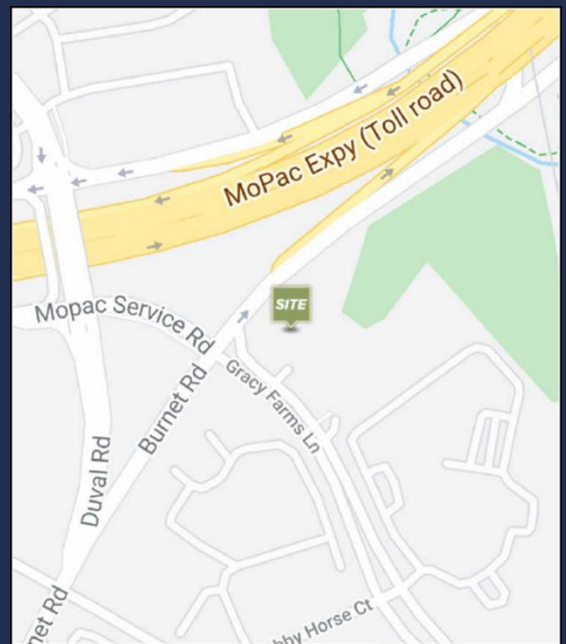




12001 N Burnet Rd,  
Suite F  
Austin, TX 78758







**Interested? Have questions?**

**Contact us!**

Kate Cooper  
Property Manager

512-520-7715

[BCPmanager101@outlook.com](mailto:BCPmanager101@outlook.com)



Charles Davis  
Manager

409-338-5032

[daviscn@msn.com](mailto:daviscn@msn.com)